



## Storageflex™ SAN Manager

### System Management

**SAN Manager delivers powerful benefits for IT administrators including:**

- **Maximize IT resources with a policy-based tool to dynamically configure and manage a SAN with minimal personnel**
- **Simplify the management of all devices in the storage fabric with an intuitive central console that automates discovery, monitoring and management throughout the enterprise**
- **Optimize your enterprise by monitoring storage network health in real-time to correct problems before they impact your business**

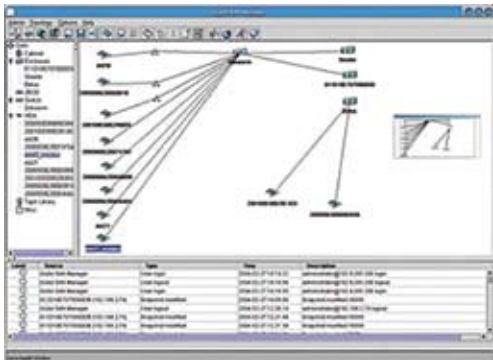
Storageflex's SAN Manager is a centralized policy-based tool that allows IT administrators to dynamically configure and manage a SAN with minimal IT resources, delivering a cost-effective solution that maximizes storage investments.

Deployed as part of Storageflex's storage networking solutions, SAN Manager is an intuitive central management console that automatically discovers, monitors and manages all the SAN components deployed throughout the enterprise, simplifying SAN operation and troubleshooting for IT personnel.

### Superior Data Management, Exceptionally Easy to Use

With simple point-and-click operations to configure and monitor storage resources, the policy-based SAN Manager enables storage administrators to dynamically configure their networks from a single management console. SAN Manager reduces management costs by simplifying daily administration and troubleshooting by providing graphical view of the SAN topology and all interconnects; by combining SAN Manager's automated and comprehensive device discovery with an easy to use GUI interface, IT personnel can quickly monitor and manage the performance of all SAN-attached components. Administrators also gain the ability to assess the health of all SAN devices and the storage fabric with the real time monitoring delivered by SAN Manager, ensuring the highest standards of performance needed by today's business.

Most SAN management solutions that are on the market today are only partial solutions to address expanding enterprises, and until now most IT administrators have had to choose multiple products to address what could be complex management issues for storage networks. With Storageflex's SAN Manager, all management tools are available in a single GUI view, allowing administrators to focus on management with one screen, not many.



Storageflex's SAN Manager delivers powerful, automated features via a central point of management to keep your storage network optimized and healthy

The consolidation of management tools allows administrators to maximize workflow and increase personnel and infrastructure efficiencies, boosting ROI for their companies. As with other data services software from Storageflex™, SAN Manager delivers a powerful competitive solution at a cost-effective price, bringing enterprise-level features within reach of small to large customers. With Storageflex's SAN Manager, businesses can be assured that the dynamic SANs that provide intelligent, automatic, and proactive management capabilities are easy to deploy and operate on a daily, 24x7 basis.

### **Available on Storageflex™ Fi240 Storage Systems**

Storageflex's SAN Manager is one of the advanced, enterprise-level data services features available to IT administrators with all Storageflex™ storage systems. Storageflex™ offers a fully redundant Fibre Channel solutions that deliver investment protection, cost-effectiveness and reliability for businesses that need a robust solution with the availability, manageability, data integrity and enterprise-level functionality required in today's data centers. Storageflex™ combines proven enterprise-level features with cost-effective Serial ATA (SAGA) disk drives to deliver efficient storage growth, scalability, data protection, storage automation and plug and play simplicity for near line applications – at a dramatically low price point.

### **About Storageflex Inc.**

A privately-held company based in Markham, Ontario, Canada, Storageflex™ is a leader in the innovative design and delivery of storage solutions with embedded enterprise-level functionality to channel partners worldwide. Its storage solutions include scalable Fibre Channel and Serial ATA products, policy-based storage management, data services software, professional services, support and training.

