



RAIDWatch 2.0 Quick Installation Guide

This installation guide discusses how to install RAIDWatch 2.0 management software into a server and/or an array. Before installing the RAIDWatch software, make sure your system meets the following requirements:

- Even if the RAIDWatch Manager is being used on a local host, TCP/IP must be installed and running with a valid IP address assigned to a server. The server be used as either a centralized management station or as a remote client using a browser to access the array. The server can also be directly attached to a RAID subsystem using in-band protocols.
- Your system display must be running in a 256 (or higher) color mode or some configuration items will not be visible. Screen size 1024 x 768 is recommended to avoid any graphic transformation.
- Be certain that your system meets the minimum hardware and software requirements. Please refer to *System Requirements* section in the *RAIDWatch GUI Users Manual*.
- Check to be certain that the RAID disk arrays and controllers are installed properly. For the installation procedures, see the documentation that came with the controller/subsystems.
- To prepare for installation and operation under different OS environments, follow the directions provided in the *Platform Requirements* section in the *RAIDWatch GUI Users Manual*.

NOTE:

RAIDWatch allows you to select several options during the installation process. However, it is recommended that all default combinations be retained. This installation guide only describes the installation process using the default settings.

Installation Procedure:

1. Before you initiate the installation process, close any other applications that are currently being run. This will minimize the possibility of encountering system errors during setup.
2. Insert the Storageflex CDROM for RAIDWatch installation into your CD/DVD-ROM drive.
3. An auto-run screen will appear. Click on the **Install Java Software** option. A new screen showing supported platforms will appear.
4. To start the installation process select **Windows NT/Windows 2000 and above** as the supported platform.

NOTE:

If you do not have a JAVA program installed in your computer, you will be asked to install a JAVA 2 Runtime Environment, SE v1.4.2 program before running the JAVA-based RAIDWatch installer. The JAVA program installer screen will guide you through the rest of the installation process.

5. An install shield will be launched and a welcome screen will appear. (See *Figure 1*) To continue installing RAIDWatch, click the **Next** button.

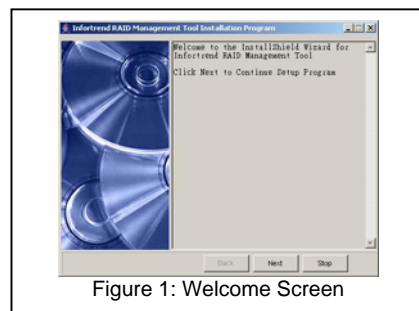


Figure 1: Welcome Screen

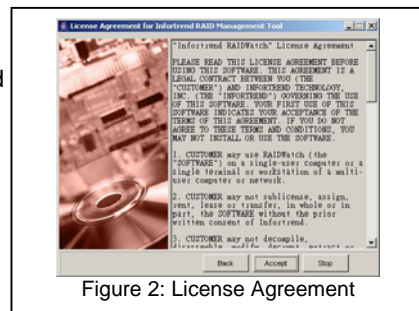


Figure 2: License Agreement

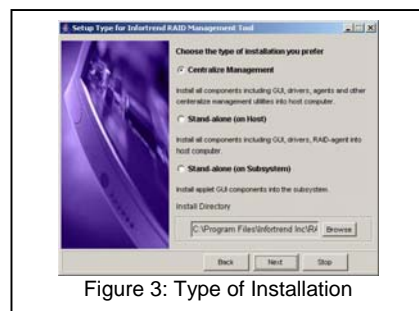


Figure 3: Type of Installation

6. A new screen (*Figure 2*) that shows the “**License Agreement**” will appear. Read though the agreement and, if you accept the terms and wish to continue installing RAIDWatch, click the “**Accept**” button.

7. A new screen with three installation options will appear. These options, shown in *Figure 3*, are Centralized Management, Stand-alone (on Host), and Stand-alone (on Subsystem). The default selection is Centralized Management. Selecting this option allows you to install the RAIDWatch GUI, a Root agent, RAID agent, a Configuration Client utility, and necessary drivers on the computer selected as the management center. The installation procedures described in this installation guide are based on the selection of **Centralized Management**. Please refer to the *RAIDWatch GUI Users Manual* for details on the other options.

8. After you have selected the **Centralized Management** option a new screen, with three more options, will appear. If you intend to run your RAID controllers/subsystems on a single server, click the default selection “**Single**” For the “**Redundancy: Master Host**” and “**Redundancy: Slave Host**” options; please refer to your *RAIDWatch GUI Users Manual* for further installation instructions.

9. In the *Select Additional Components* screen shown in *Figure 5*, check or uncheck all the components that are available on your system. Then, to initiate the installation process, click the “**Next**” button.

10. The installer program will start to copy the application files to your system. (See *Figure 6*)

11. Once the software has been successfully installed, an *Installation Completed* screen shown in *Figure 7* will appear. Click on the “**OK**” button. You are now ready to start using the RAIDWatch Management software to configure your system.



Figure 4: Select Single or Redundant Software Mode

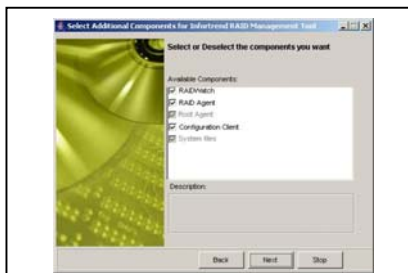


Figure 5: Select Components



Figure 6: Installer Program is Copying Files



Figure 7: Installation Completed